



**Shaw  
& Co**  
ESTATE  
AGENTS

**£410,000**

**Castle Way**  
Feltham, TW13 7QQ

**Shaw  
& Co**



## PROPERTY SUMMARY

Set within the prestigious Hanworth Park Estate, Tudor Court beautifully combines contemporary living with historic charm.

The apartment features a bright, generously sized reception room, a modern fitted kitchen, three well-proportioned bedrooms, and a stylish contemporary family bathroom. It also offers excellent internal storage and retains elegant period features throughout.

This exceptional first-floor apartment features three spacious double bedrooms and offers seamless access to the estate's stunning private grounds. Offering a perfect harmony of heritage and contemporary living, this rare gem is an ideal choice for buyers seeking a truly unique home.

Don't miss your chance to make this extraordinary residence your home!

Share of Freehold - 973 years remaining

3



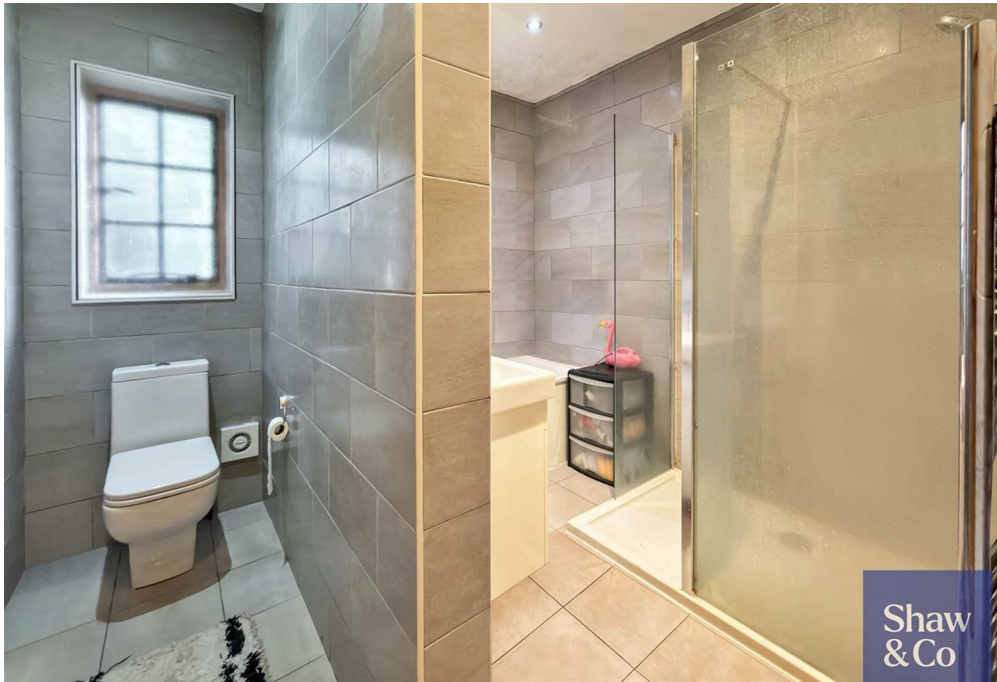
1



1



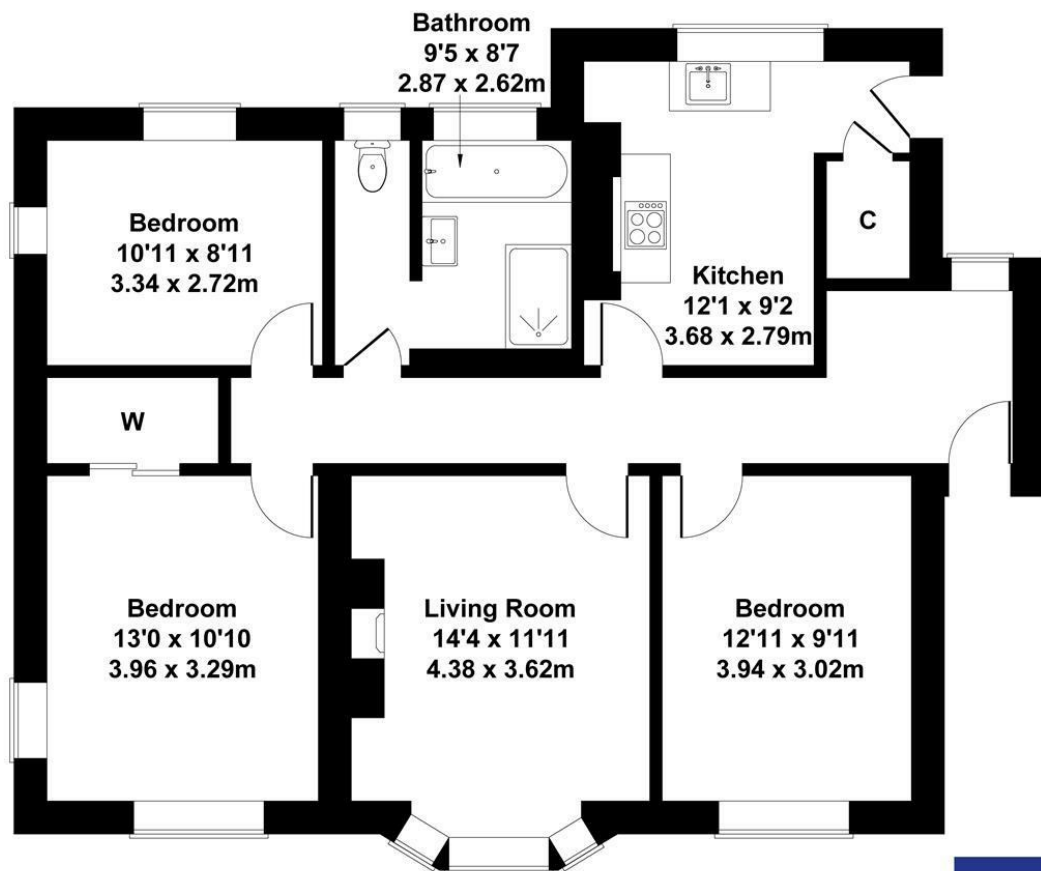






# Tudor Court

Approximate Gross Internal Area  
980 sq ft - 91 sq m



Not to Scale. Produced by The Plan Portal 2025  
For Illustrative Purposes Only.

Shaw  
& Co

## LOCAL AUTHORITY

Hounslow

## TENURE

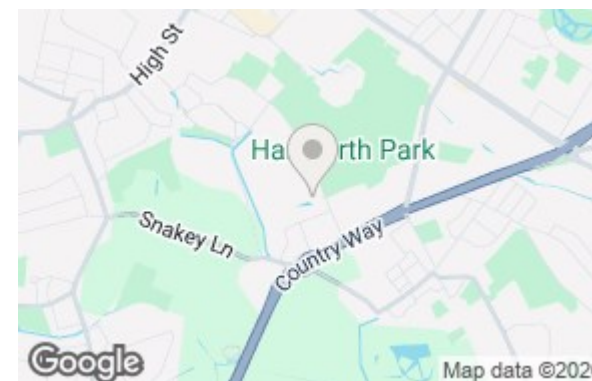
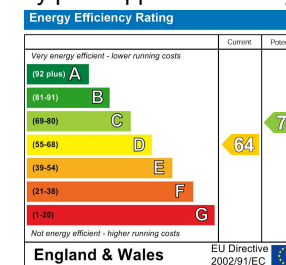
Leasehold - Share of Freehold

## COUNCIL TAX BAND

E

## VIEWINGS

By prior appointment only



Agents Note: Whilst every care has been taken to prepare these particulars, they are for guidance purposes only. All measurements are approximate and are for general guidance purposes only and whilst every care has been taken to ensure their accuracy, they should not be relied upon and potential buyers/tenants are advised to recheck the measurements

**Shaw  
& Co**  
ESTATE  
AGENTS

OFFICE ADDRESS  
Whitton  
Twickenham  
TW2 7LT

OFFICE DETAILS  
0208 894 3646  
whitton@shawandcoestates.com